

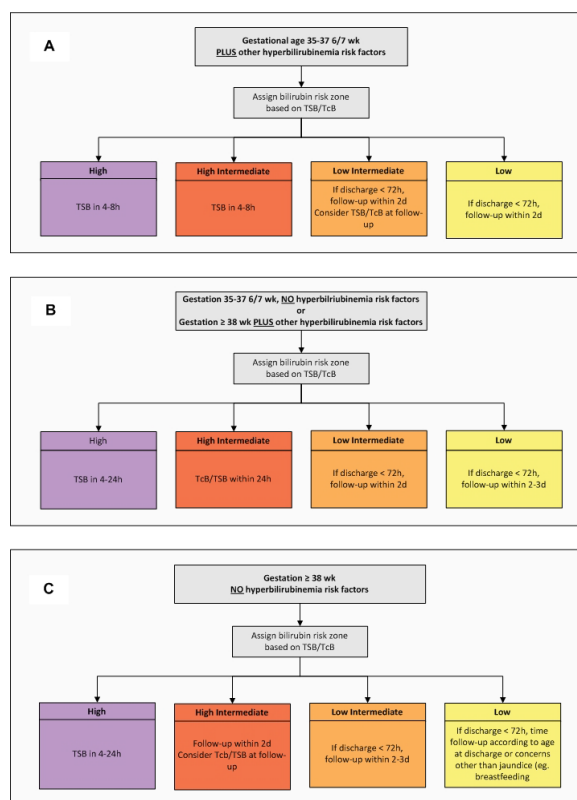
## STEPS 22- 23: Plot Hour-Specific Bilirubin Nomogram Bhutani VK

Assess Risk Factors for **Severe Hyperbilirubinemia**

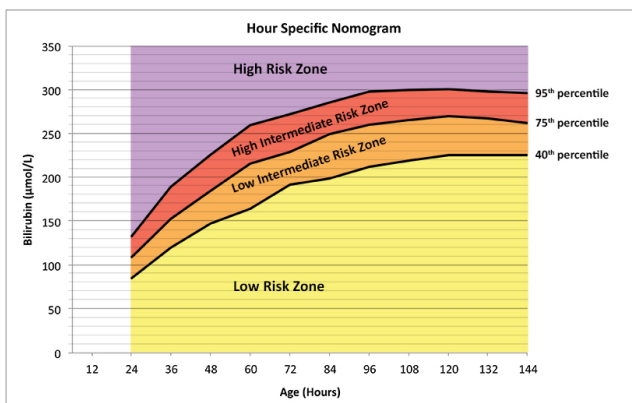
### RF#2

- Gestational age
- Positive DAT or other known haemolytic disease
- Previous sibling with neonatal jaundice requiring phototherapy
- Cephalohaematoma or significant bruising
- Exclusively breastfeeding, not well established
- East Asian Race

## Follow Up Algorithm



Maisels, MJ 2009



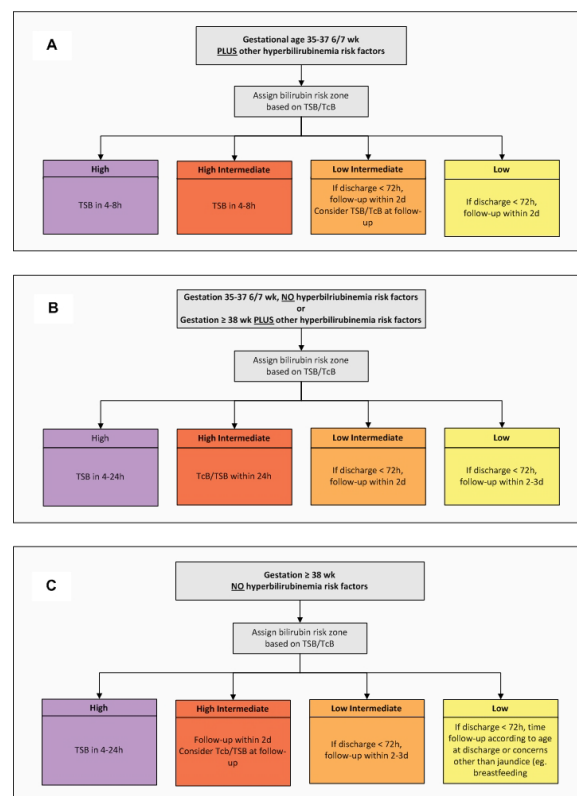
## STEPS 22- 23: Plot Hour-Specific Bilirubin Nomogram Bhutani VK

Assess Risk Factors for **Severe Hyperbilirubinemia**

### RF#2

- Gestational age
- Positive DAT or other known haemolytic disease
- Previous sibling with neonatal jaundice requiring phototherapy
- Cephalohaematoma or significant bruising
- Exclusively breastfeeding, not well established
- East Asian Race

## Follow Up Algorithm



Maisels, MJ 2009